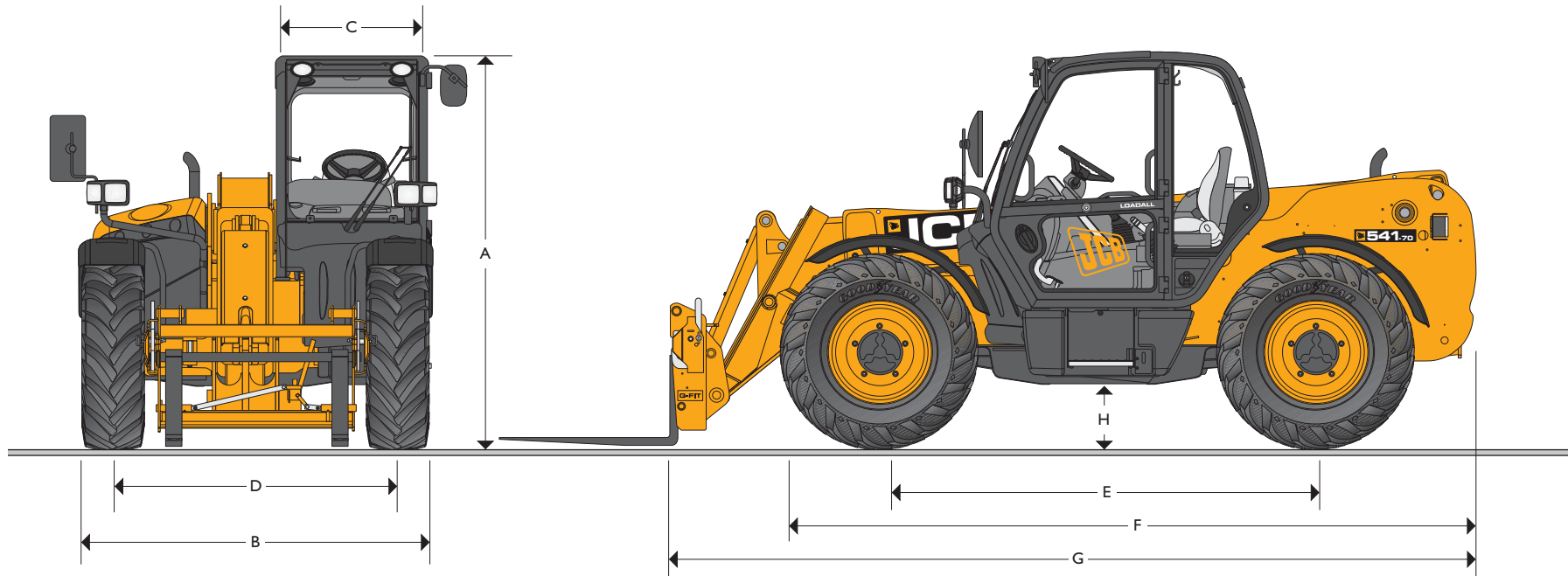




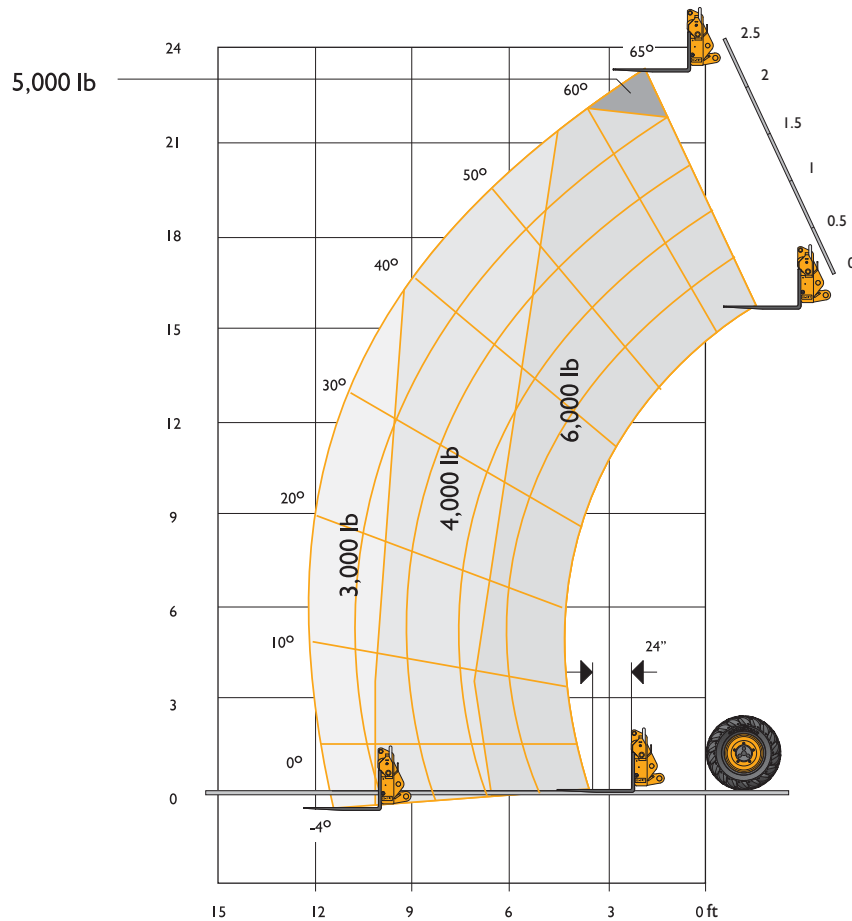
MAX PAYLOAD: 531-70T - 6,000 lb 541-70 T - 9,000 lb MAX LIFT HEIGHT: 23 ft (7 m) MAX POWER: 109 (81kW)



### STATIC DIMENSIONS

Machine Model	531-70T / 541-70T	Machine Model	531-70T / 541-70T
	ft-in (m)		ft-in (m)
A Overall Height	8-2 (2.49)	G Overall Length to Front Carriage	16-4 (4.99)
B Overall Width (over tires)*	7-4 (2.23)	H Ground Clearance	1-4 (0.40)
C Inside Width of Cab	3-1 (0.94)	Outside Turn Radius (over tires)	12-2 (3.70)
D Front Track	5-11 (1.81)	Weight	lb (kg) 15,560 (7060) / 17,306 (7850)
E Wheelbase	9-0 (2.75)	Tires	15.5/25
F Overall Length to Front Tires	14-4 (4.38)		

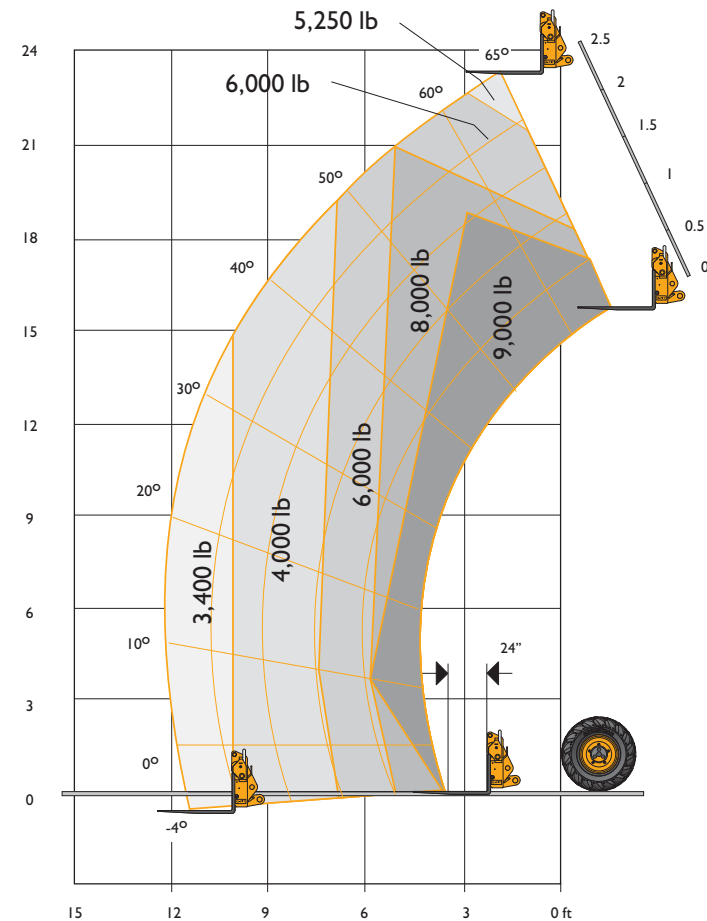
\*Dependant upon tire specified.



LIFT PERFORMANCE – 531-70T RIGID FRAME

Maximum Lift Capacity	lb (kg)	6000 (2722)
Lift Capacity to Full Height	lb (kg)	5000 (2268)
Lift Capacity at Full Reach	lb (kg)	3000 (1360)
Lift Height	ft-in (m)	23-0 (7.0)
Reach at Maximum Lift Height	ft-in (m)	2-0 (0.61)
Maximum Forward Reach	ft-in (m)	12-6 (3.84)

Complies with stability test ASME B56.6 1992.



LIFT PERFORMANCE – 541-70T RIGID FRAME

Maximum Lift Capacity	lb (kg)	9000 (4090)
Lift Capacity to Full Height	lb (kg)	5250 (2382)
Lift Capacity at Full Reach	lb (kg)	3500 (1543)
Lift Height	ft-in (m)	23-0 (7.0)
Reach at Maximum Lift Height	ft-in (m)	2-0 (0.61)
Maximum Forward Reach	ft-in (m)	12-6 (3.8)

Complies with stability test ASME B56.6 1992.



### ENGINE - JCB DIESELMAX

Latest technology and advanced design provides low fuel consumption, reduced noise, high torque and power output, total reliability and minimal maintenance. Two-stage, dry type air filter with primary and safety elements. EPA Tier 4i emissions compliant.

Machine Model	531-70T / 541-70T	
Displacement	in <sup>3</sup> (l)	269 (4.4)
No of Cylinders		4
Bore Size	in (mm)	4.05 (103)
Stroke	in (mm)	5 (132)
Aspiration		Turbo
<b>Power Rating</b>		
Power @ 2200 rpm	hp (kW)	109 (81kw)
<b>Torque Rating</b>		
Torque @ 1500 rpm	lb-ft (nm)	381 (516)

### TRANSMISSION

JCB powershift transmission incorporating torque converter, bevel box and a 4 speed powershift gearbox in one resiliently mounted unit.

A combined steering column mounted switch incorporating directional control and 4 forward and 4 reverse powershift gears. Travel speed 20 mph (33km/h).

**Front and Rear Drive Axles:** JCB epicyclic hub reduction drive/steer axles with Max-Trac torque proportioning differentials. Permanent 4 wheel drive.

### BRAKES

**Service Brakes:** Hydraulically activated, self-adjusting, oil-immersed, in-board multi-disc type on front and rear axle.

**Parking Brake:** Hand operated disc brake on output of gearbox.

### BOOM AND CARRIAGE

Boom is manufactured from high tensile steel.

Low maintenance, hard wearing pads.

JCB Q-fit self-levelling carriage with lever operated pin locking accepts pallet forks and a wide range of attachments.

One boom end auxiliary hydraulic service fitted as standard.

### SAFETY CHECK VALVES

Fitted to carriage tilt, telescopic and boom lift rams.

### SERVICE CAPACITIES

Fuel Tank	gal (l)	39 (148)
Hydraulic Tank	gal (l)	29.9 (113)
Coolant	gal (l)	6.1 (23)

### HYDRAULICS

Two stage gear pump with suction strainer and filter.

	531-70T	541-70T	
Operating System Pressure	psi (bar)	3500 (241)	3770 (260)
Pump Flow	gal/min (l/min)	21.6 (82)	23.2 (88)
<b>Hydraulic Cycle Times</b>			
	<b>Seconds</b>	<b>Seconds</b>	
Boom Raise	7.2	8.8	
Boom Lower	5.4	6.5	
Extend	6.8	6.8	
Retract	5.0	5.0	
Bucket Dump	3.5	3.5	
Bucket Crowd	2.9	2.9	

### ELECTRICS

12 V negative ground. 850CCA battery. 95 amp alternator. Reverse alarm.

### CAB

Quiet, safe and comfortable cab conforms to ROPS ISO 3471 and FOPS ISO 3449. Tinted glass all round with laminated roof glass. Roof bars, front, rear and roof glass with wash/wipe and heater/defroster. Opening rear window. Audio-visual warning system for coolant temperature, engine oil pressure, air cleaner, battery charge, transmission oil temperature and pressure, water in fuel, hourmeter, road speed indicator, engine temperature, fuel gauge and inclinometer. Mechanical joystick, direct acting hydraulic control levers. Adjustable steering column incorporates forward reverse shuttle lever and powershift speed selector. Throttle and brake pedal. Adjustable suspension seat with adjacent mechanically actuated park brake. Leveling inclinometer. Safety canopy as above but with side glass and roof glass only (wiper and heater/defroster not applicable).

### STEERING

Hydrostatic power steering with power track rods on both axes.

Three steer mode options: front wheel steer; all wheel steer; crab steer: operated from in the cab by a selection lever.

### OPTIONS AND ACCESSORIES

**Options:** Front and rear work lights, road lighting package, industrial tires, electrical 2/4WD disconnect, windshield and roof guard, air suspension seat, deluxe cab trim, radio kit, air conditioning. Single lever mechanical joystick, with push button extend and retract.

**Attachments:** Contact your local dealer for details of the comprehensive range.



## A GLOBAL COMMITMENT TO QUALITY

JCB's total commitment to its products and customers has helped it grow from a one-man business into one of the world's largest manufacturers of backhoe loaders, crawler excavators, wheeled excavators, telescopic handlers, wheeled loaders, dump trucks, rough terrain fork lifts, industrial fork lifts, mini/midi excavators, skid steer loaders and tractors.

By making constant and massive investments in the latest production technology, the JCB factories have become some of the most advanced in the world.

By leading the field in innovative research and design, extensive testing and stringent quality control, JCB machines have become renowned all over the world for performance, value and reliability.

And with an extensive dealer sales and service network in over 150 countries, we aim to deliver the best customer support in the industry.

Through setting the standards by which others are judged, JCB has become one of the world's most impressive success stories.



JCB Headquarters Savannah, 2000 Bamford Blvd, Savannah, GA 31322 Tel: (912) 447-2000 Fax: (912) 447-2299 [www.jcb.com](http://www.jcb.com)

JCB reserves the right to change design, materials and/or specifications without notice. Specifications are applicable to units sold in the United States and Canada. The JCB logo is a registered trademark of J C Bamford Excavators Ltd.