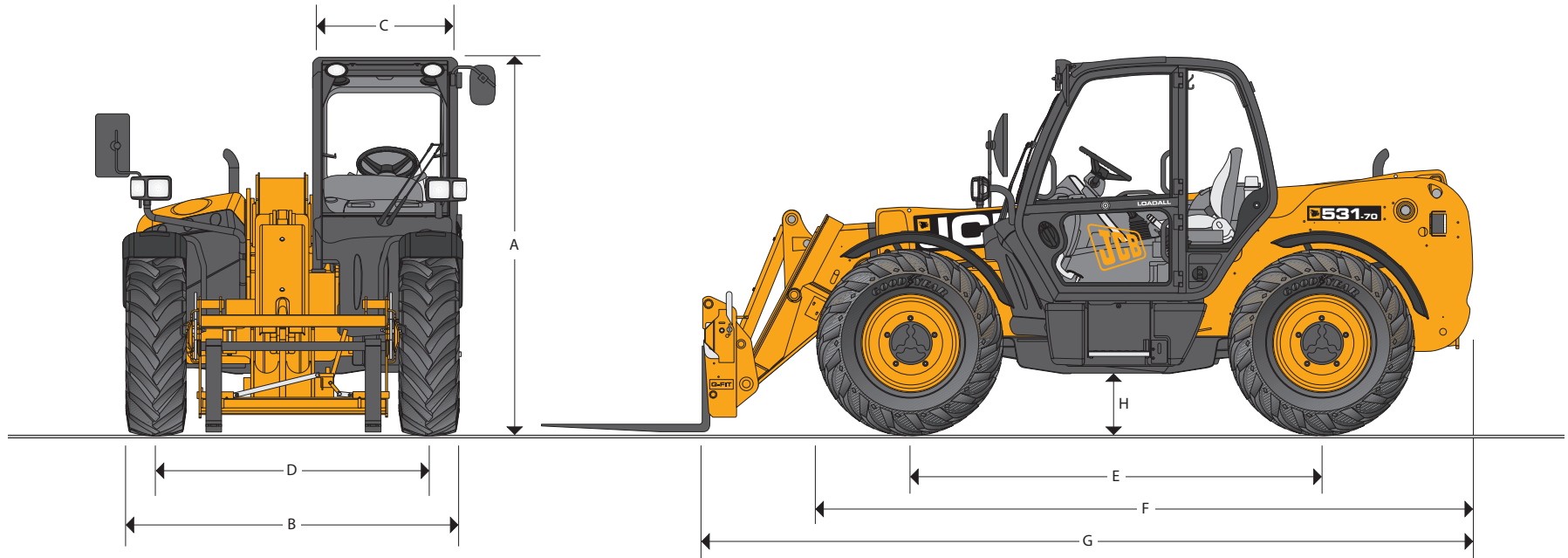




MAX PAYLOAD: 6,000 lb (2,722 kg)    MAX LIFT HEIGHT: 23 ft (7.0 m)    MAX HORSEPOWER: 74 hp (55 kW)



STATIC DIMENSIONS 531-70

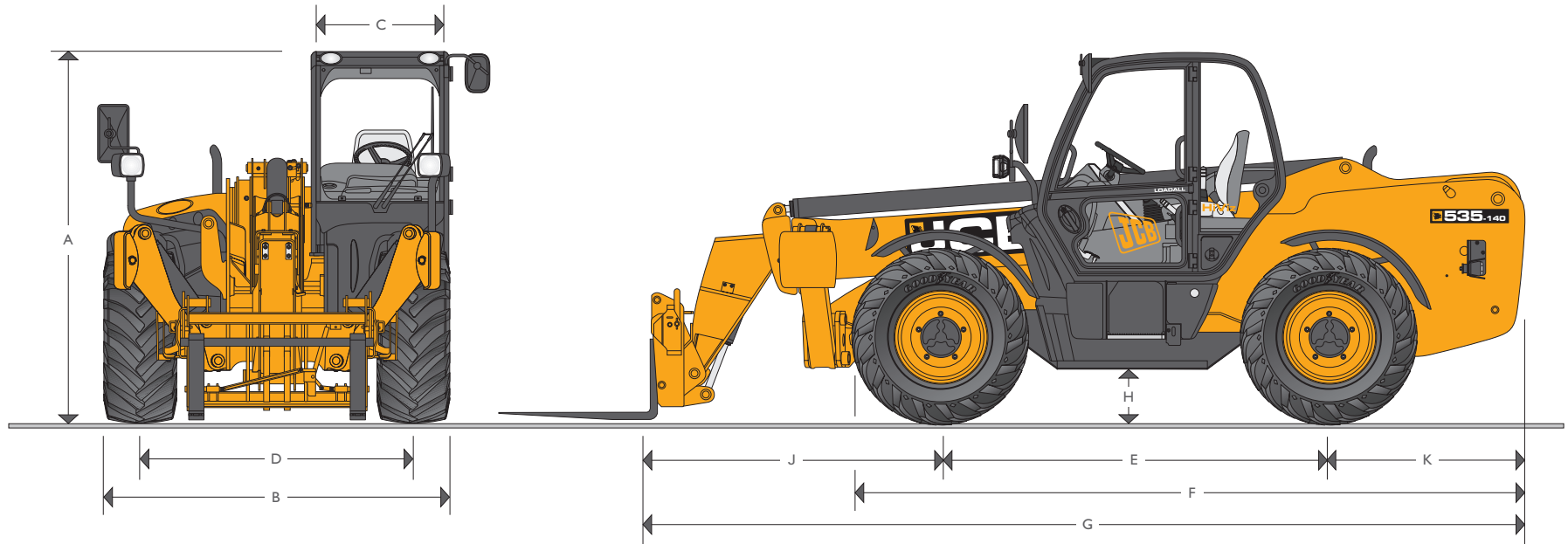
Machine Model	531-70
	ft-in (m)
A Overall Height	8-2 (2.49)
B Overall Width (over tires)*	7-4 (2.23)
C Inside Width of Cab	3-1 (0.94)
D Front Track	5-11 (1.81)
E Wheelbase	9-0 (2.75)
F Overall Length to Front Tires	14-4 (4.38)

Machine Model	531-70
	ft-in (m)
G Overall Length to Front Carriage	16-4 (4.99)
H Ground Clearance	1-4 (0.40)
Outside Turn Radius (over tires)	12-2 (3.70)
Weight	lb (kg) 15,560 (7060)
Tires	15.5/80-24

\*Dependant upon tire specified.



MAX PAYLOAD: 8,000 lb (3,629 kg)    MAX LIFT HEIGHT: 45 ft 2 in (13.8 m)    MAX HORSEPOWER: 109 hp (81 kW)



STATIC DIMENSIONS 535-140 HiViz

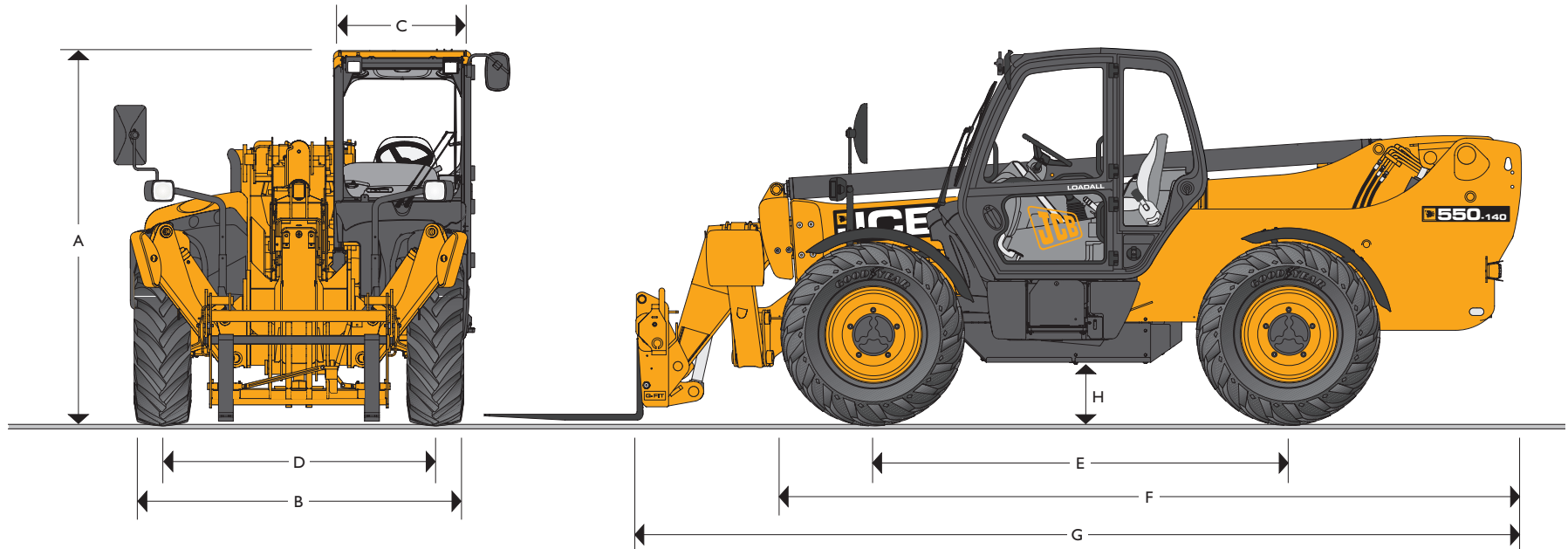
Machine Model	535-140 HiViz
	ft-in (m)
A Overall Height	8-6 (2.59)
B Overall Width (over tires)*	7-9 (2.35)
C Inside Width of Cab	3-1 (0.94)
D Front Track	6-3 (1.90)
E Wheelbase	9-0 (2.75)
F Overall Length to Front Tires	15-7 (4.74)
G Overall Length to Front Carriage	20-5 (6.23)
H Ground Clearance	1-4 (0.40)
J Front Wheel Center to Carriage	6-11 (2.11)

Machine Model	535-140 HiViz
	ft-in (m)
K Rear Wheel Center to Rear Face	4-6 (1.37)
Overall Width with Stabilizers Fully Deployed	8-5 (2.57)
Outside Turn Radius (over tires)	12-4 (3.75)
Bucket Roll Back Angle @ Ground Level	degrees 37
Bucket Dump Angle @ Boom Fully Raised	degrees 12.5
Weight	lb (kg) 23,986 (10,880)
Tires	15.5/80-24

\*Dependent upon tire specified.



MAX PAYLOAD: 10,000 lb (4,535 kg)    MAX LIFT HEIGHT: 44 ft 3 in (13.5 m)    MAX HORSEPOWER: 109 hp (81 kW)



STATIC DIMENSIONS 550-140

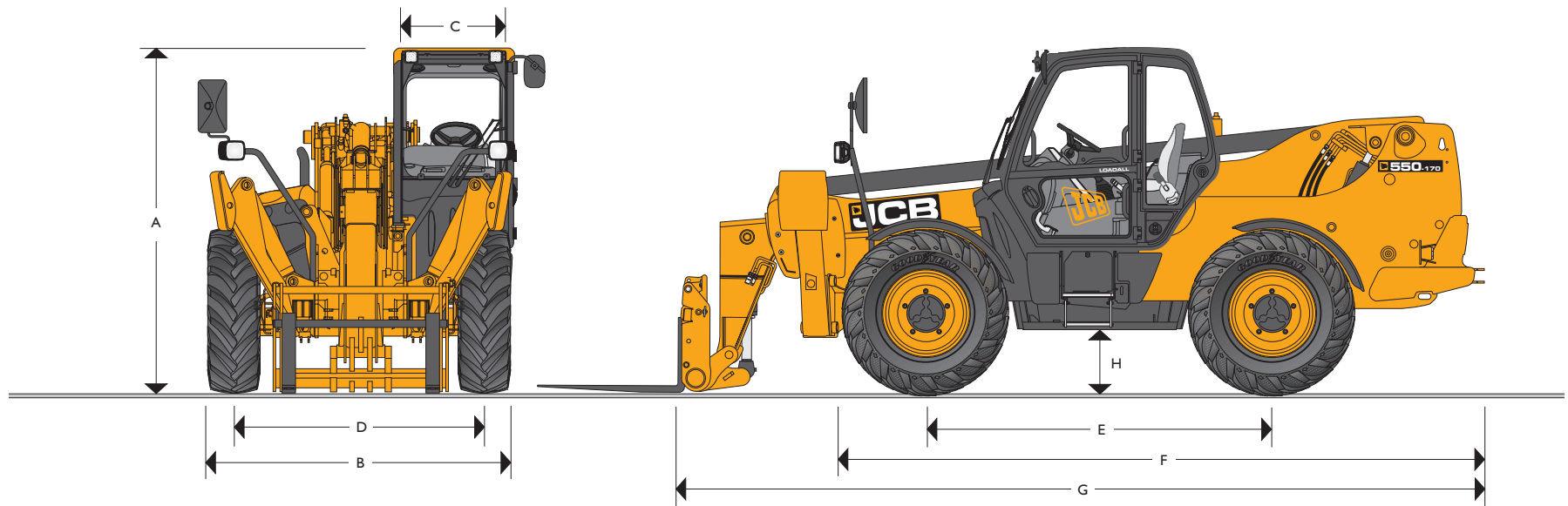
Machine Model	550-140
	ft-in (m)
A Overall Height	8-6 (2.59)
B Overall Width (over tires)*	7-9 (2.35)
C Inside Width of Cab	3-1 (0.94)
D Front Track	6-3 (1.90)
E Wheelbase	9-6 (2.90)
F Overall Length to Front Tires	17-0 (5.18)

Machine Model	550-140
	ft-in (m)
G Overall Length to Front Carriage	20-6 (6.25)
H Ground Clearance	1-4 (0.40)
Outside Turn Radius (over tires)	13-5 (4.10)
Weight	lb (kg) 24,449 (11,090)
Tires	15.5-25

\*Dependant upon tire specified.



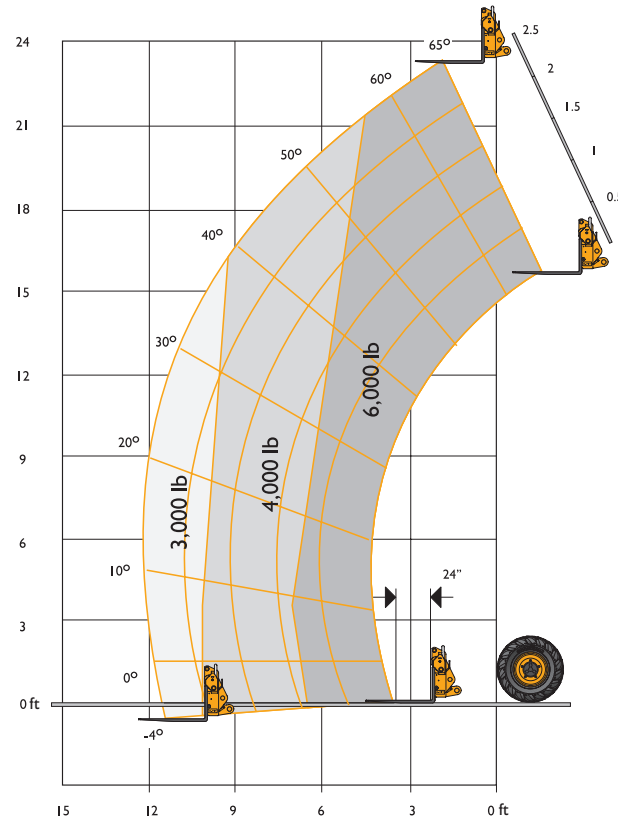
MAX PAYLOAD: 10,000 lb (4,535 kg)    MAX LIFT HEIGHT: 54 ft 9 in (16.7 m)    MAX HORSEPOWER: 109 hp (81 kW)



STATIC DIMENSIONS 550-170

Machine Model	550-170	Machine Model	550-170
	ft-in (m)		ft-in (m)
A Overall Height	8-10 (2.69)	G Overall Length to Front Carriage	20-10 (6.36)
B Overall Width (over tires)*	8-0 (2.44)	H Ground Clearance	1-4 (0.40)
C Inside Width of Cab	3-1 (0.94)	Outside Turn Radius (over tires)	13-5 (4.1)
D Front Track	6-3 (1.90)	Weight	lb (kg) 27,494 (12,470)
E Wheelbase	9-0 (2.75)	Tires	17.5-25 I6PR
F Overall Length to Front Tires	16-8 (5.08)		

\*Dependant upon tire specified.

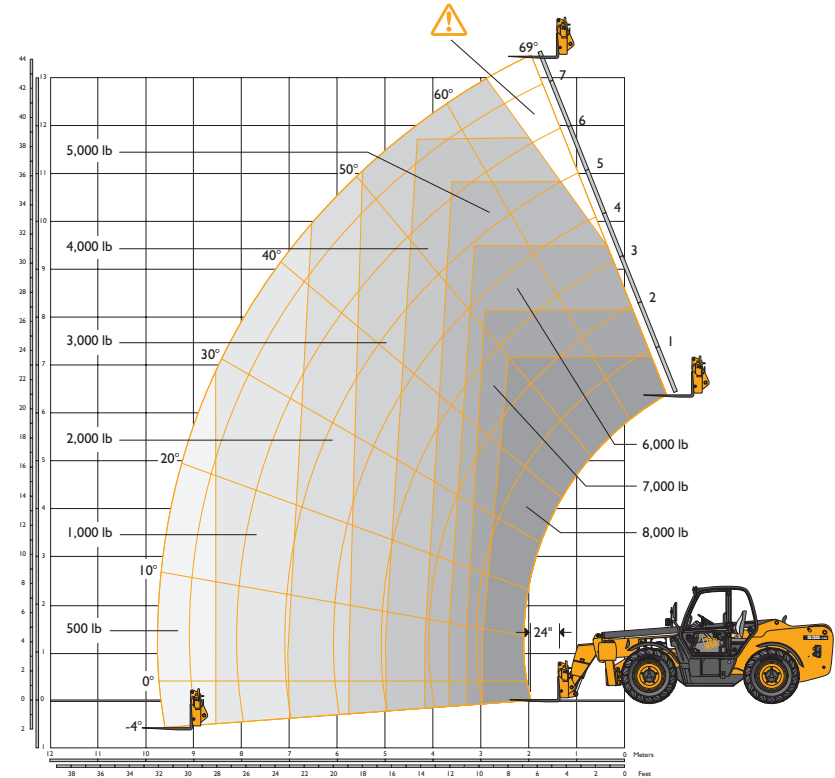
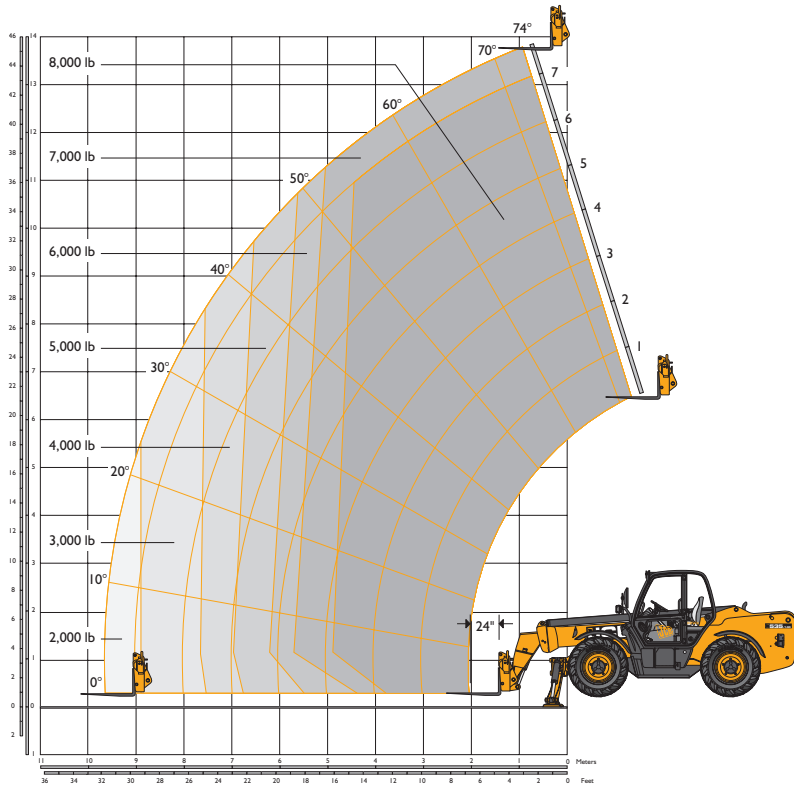


Chassis Levelling (Sway)  
With stabilizers retracted (Sway angle  $\pm 9^\circ$ )

### LIFT PERFORMANCE – 531-70 SWAY FRAME

Maximum Lift Capacity	lb (kg)	6000 (2722)
Lift Capacity to Full Height	lb (kg)	6000 (2722)
Lift Capacity at Full Reach	lb (kg)	3000 (1250)
Lift Height	ft-in (m)	23-0 (7.0)
Reach at Maximum Lift Height	ft-in (m)	2-0 (0.61)
Maximum Forward Reach	ft-in (m)	12-2 (3.84)

Complies with stability test ASME B56.6



Chassis Leveling (Sway)  
With stabilizers retracted (Sway angle  $\pm 9^\circ$ )

### LIFT PERFORMANCE – STABILIZERS EXTENDED

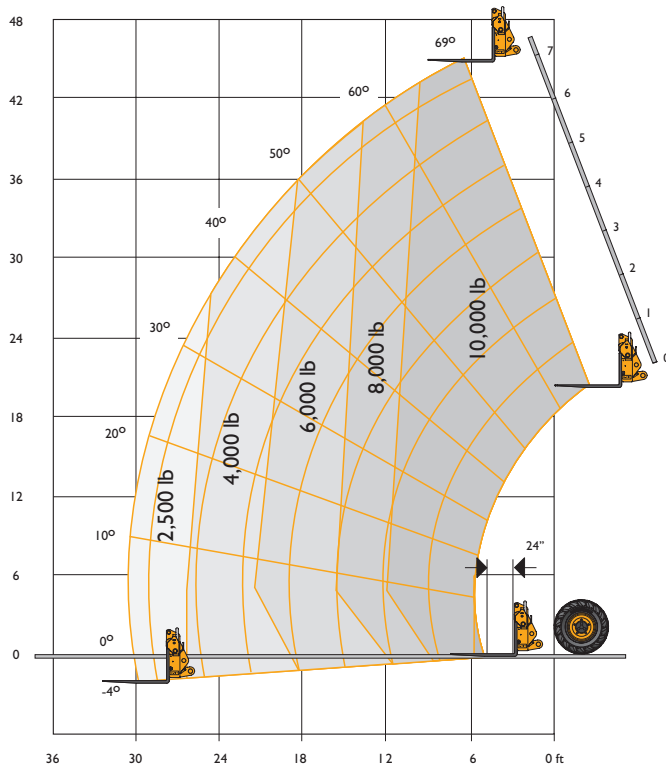
With Stabilizers Extended		
Maximum Lift Capacity	lb (kg)	8000 (3629)
Lift Capacity to Full Height	lb (kg)	7000 (3175)
Lift Capacity at Full Reach	lb (kg)	2000 (907)
Lift Height	ft-in (m)	45-2 (13.78)
Reach at Maximum Lift Height	ft-in (m)	3-0 (0.93)
Maximum Forward Reach	ft-in (m)	31-6 (9.60)
Reach with 1 Ton Load	ft-in (m)	31-6 (9.60)
Placing Height	ft-in (m)	43-8 (13.30)

Complies with stability test ASME B56.6

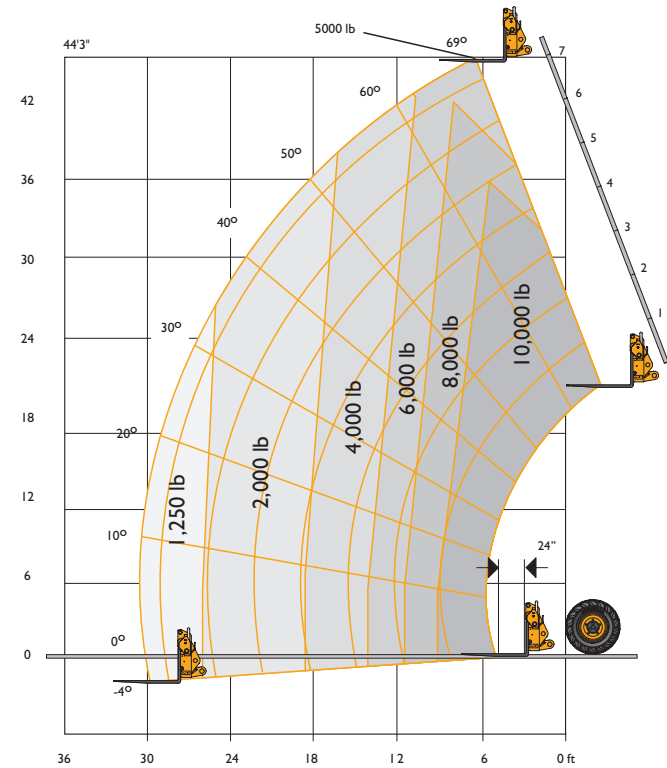
### LIFT PERFORMANCE – STABILIZERS RETRACTED

With Stabilizers Retracted		
Maximum Lift Capacity	lb (kg)	8000 (3629)
Lift Capacity to Full Height	lb (kg)	3000 (1361)
Lift Capacity at Full Reach	lb (kg)	500 (227)
Lift Height	ft-in (m)	44-2 (13.47)
Reach at Maximum Lift Height	ft-in (m)	6-4 (1.94)
Maximum Forward Reach	ft-in (m)	31-10 (9.70)
Reach with 1 Ton Load	ft-in (m)	21-8 (6.61)
Placing Height	ft-in (m)	42-9 (13.02)

Complies with stability test ASME B56.6



Ballasted Tires



Chassis Levelling (Sway)  
With stabilisers retracted (Sway angle  $\pm 9^\circ$ )  
Ballasted Tires

**LIFT PERFORMANCE – 550-140 STABILIZERS DOWN**

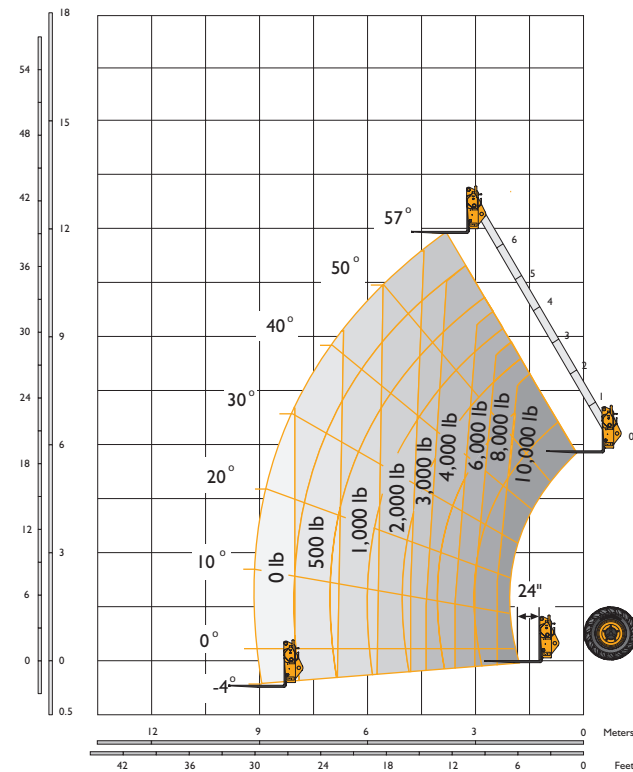
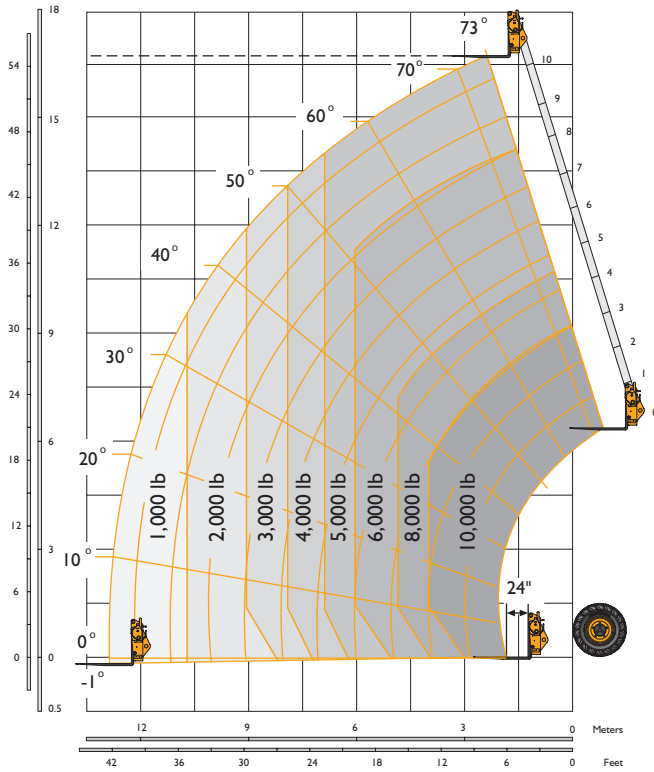
With Stabilizers Down		
Maximum Lift Capacity	lb (kg)	10,000 (4535)
Lift Capacity to Full Height	lb (kg)	10,000 (4535)
Lift Capacity at Full Reach	lb (kg)	2500 (1133)
Lift Height	ft-in (m)	44-3 (13.50)
Reach at Maximum Lift Height	ft-in (m)	5-6 (1.71)
Maximum Forward Reach	ft-in (m)	30-8 (9.39)

Complies with stability test ASME B56.6

**LIFT PERFORMANCE – 550-140 STABILIZERS UP**

With Stabilizers Up		
Maximum Lift Capacity	lb (kg)	10,000 (4535)
Lift Capacity to Full Height	lb (kg)	6000 (2721)
Lift Capacity at Full Reach	lb (kg)	1250 (567)
Lift Height	ft-in (m)	44-3 (13.50)
Reach at Maximum Lift Height	ft-in (m)	5-6 (1.71)
Maximum Forward Reach	ft-in (m)	30-8 (9.39)

Complies with stability test ASME B56.6



Chassis Levelling (Sway)  
With stabilizers retracted (Sway angle  $\pm 9^\circ$ )

**LIFT PERFORMANCE – 550-170 STABILIZERS DOWN**

With Stabilizers Down		
Maximum Lift Capacity	lb (kg)	10,000 (4535)
Lift Capacity to Full Height	lb (kg)	5000 (2269)
Lift Capacity at Full Reach	lb (kg)	1000 (453)
Maximum Lift Height	ft-in (m)	54-9 (16.70)
Reach at Maximum Lift Height	ft-in (m)	6-8 (2.03)
Maximum Forward Reach	ft-in (m)	41-5 (12.60)
Placing Height	ft-in (m)	53-2 (16.20)

Complies with stability test ASME B56.6

**LIFT PERFORMANCE – 550-170 STABILIZERS UP**

With Stabilizers Retracted		
Maximum Lift Capacity	lb (kg)	10,000 (4535)
Lift Capacity to Maximum Lift Height	lb (kg)	3000 (1361)
Lift Capacity at Full Reach	lb (kg)	0 (0)
Maximum Lift Height	ft-in (m)	42-10 (13.06)
Reach at Maximum Lift Height	ft-in (m)	7-0 (2.13)
Maximum Forward Reach	ft-in (m)	30-0 (9.14)
Placing Height	ft-in (m)	35-9 (10.90)

Complies with stability test ASME B56.6





### ENGINE - JCB DIESELMAX

Latest technology and advanced design provides low fuel consumption, reduced noise, high torque and power output, total reliability and minimal maintenance.

Two-stage, dry type air filter with primary and safety elements. **EPA Tier III emissions compliant.**

Machine Model		531-70	535-140 HiViz / 550-140 / 550-170
Displacement	in <sup>3</sup> (l)	269 (4.4)	269 (4.4)
No of Cylinders		4	4
Aspiration		Turbo	Turbo
<b>Power Rating</b>			
Power @ 2200 rpm	hp (kW)	74 (55)	109 (81KW)
<b>Torque Rating</b>			
Torque @ 1200 rpm	lbf ft (nm)	295(400)	
Torque @ 1500 rpm	lbf ft (nm)		381 (516)

### TRANSMISSION

JCB powershift transmission incorporating torque converter, bevel box and a 4 speed powershift gearbox in one resiliently mounted unit.

A combined steering column mounted switch incorporating directional control and 4 forward and 4 reverse powershift gears.

Travel speed 16 mph (25 km/h), optional 20.5 mph (33 km/h). For 531-70, 17 mph (28 km/h), 20 mph (32 km/h) with 2/4 WD

**Front and Rear Drive Axles:** JCB epicyclic hub reduction drive/steer axles with Max-Trac torque proportioning differentials. Permanent 4 wheel drive.

### BRAKES

**Service Brakes:** Servo-assisted-hydraulically activated, self-adjusting, oil-immersed multi-disc type on front and rear axle.

**Parking Brake:** Hand operated disc brake on output of gearbox.

### BOOM AND CARRIAGE

Boom is manufactured from high tensile steel.

Low maintenance, hard wearing pads.

JCB Q-fit self-levelling carriage with lever operated pin locking accepts pallet forks and a wide range of attachments.

One boom end auxiliary hydraulic service fitted as standard.

### SAFETY CHECK VALVES

Fitted to carriage tilt, telescopic and boom lift cylinders.



### SERVICE CAPACITIES

Machine Model		531-70	535-140	550-140	550-170
Fuel Tank	gal (l)	39 (148)	33 (125)	33 (125)	33 (125)
Hydraulic Tank	gal (l)	29 (113)	34 (127)	35 (131)	40 (150)
Coolant	gal (l)	6 (23)	6 (23)	6 (23)	6 (23)

### STEERING

Hydrostatic power steering. (531-70 comes w/ power track rods on both axles)  
 Three steer mode options: front wheel steer; all wheel steer; crab steer: operated from in the cab by a selection lever.

### OPTIONS AND ACCESSORIES

**Options:** Front and rear working lights, industrial tires, electrical 2/4WD select, radio kit, air conditioning, air suspension seat, deluxe cab trim, windshield and roof guard.

**Attachments:** Contact your local dealer for details of the comprehensive range.

### ELECTRICS

12 v negative earth. 850 CCA battery. 95 amp alternator. Hazard warning. Reverse alarm. Optional full road lighting. Reversing light. Direction indicators.

### CAB

Quiet safe and comfortable cab conforms to ROPS ISO 3471 and FOPS ISO 3449. Tinted glass all round. Laminated roof screen. Roof bars, front, rear and roof screen wiper/washer and heater/screen defroster. Opening rear window. Audio-visual warning system for coolant temperature, engine oil pressure, air cleaner, battery charge, transmission oil, water in fuel temperature and pressure. Hourmeter and road speed indicator. Engine temperature, fuel gauge and inclinometer.

Adjustable steer column with stalk bar powershift change and forward reverse shuttle. Throttle and brake pedal.

Adjustable suspension seat with adjacent mechanically activated park brake. Includes leveling inclinometer. Safety canopy as above but with side glass and roof glass only (screen wiper and heater/screen defroster not applicable).

### HYDRAULICS

Two Stage Gear Pump with Suction Strainer and Filter:		531-170	535-140	550-140	550-170
Operating System Pressure	psi (bar)	3500 (241)	3770 (260)	3500 (241)	3770 (260)
Pump Flow	gal/min (l/min)	21.6 (82)	29 (110)	29 (110)	43 (162)
<b>Hydraulic Cycle Times</b>		<b>Seconds</b>	<b>Seconds</b>	<b>Seconds</b>	<b>Seconds</b>
Boom Raise		7.2	13.5	14.2	
Boom Lower		5.4	11	11.9	
Extend		6.8	15.6	22.3	
Retract		5.0	14.4	18.6	
Bucket Dump		3.5	1.7	2.4	4.7
Bucket Crowd		2.9	2.0	3.2	5.1
Boom Raise and Extend					41.8
Boom Lower and Retract					33



## A GLOBAL COMMITMENT TO QUALITY

JCB's total commitment to its products and customers has helped it grow from a one-man business into one of the world's largest manufacturers of backhoe loaders, crawler excavators, wheeled excavators, telescopic handlers, wheeled loaders, dump trucks, rough terrain fork lifts, industrial fork lifts, mini/midi excavators, skid steer loaders and tractors.

By making constant and massive investments in the latest production technology, the JCB factories have become some of the most advanced in the world.

By leading the field in innovative research and design, extensive testing and stringent quality control, JCB machines have become renowned all over the world for performance, value and reliability.

And with an extensive dealer sales and service network in over 150 countries, we aim to deliver the best customer support in the industry.

Through setting the standards by which others are judged, JCB has become one of the world's most impressive success stories.



JCB Headquarters Savannah, 2000 Bamford Blvd, Savannah, GA 31322 Tel: (912) 447-2000 Fax: (912) 447-2299 [www.jcb.com](http://www.jcb.com)

JCB reserves the right to change design, materials and/or specifications without notice. Specifications are applicable to units sold in the United States and Canada. The JCB logo is a registered trademark of J.C. Bamford Excavators Ltd.