

# SPECIFICATIONS

## HL930A™

Powered By Cummins Performance Series Engine



**Net Power**

130 HP (97 kW) / 2,200 rpm

**Operating Weight**

11,960 kg (26,370 lb)

**Standard Bucket**

1.9 m<sup>3</sup> / 2.5 yd<sup>3</sup>



**HYUNDAI**  
CONSTRUCTION EQUIPMENT

# SPECIFICATIONS HL930A TM

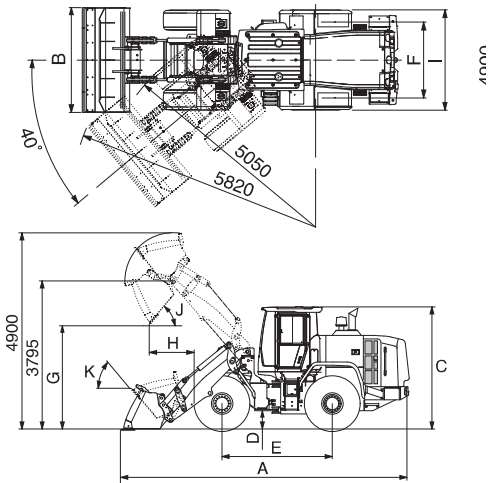
ENGINE		
Maker / Model	CUMMINS / B4.5	
Type	Tier 4F/ Stage V Emission Certified, 4 cylinder diesel engine with No Manual Regeneration.	
Gross Power	133 hp (99 kW) @ 2,200 rpm	
Net Power	130 hp (97 kW) @ 2,200 rpm	
Max. Power	133 hp (99 kW) @ 2,200 rpm	
Peak Gross Torque	467 lb-ft (633 N-m) @ 1,200 rpm	
Displacement	4.5 ℓ (275 cu in)	
Compression Ratio	17.2: 1	
Alternator	Brushless (24V-95A Amp)	
Battery	2 x 12 V x 100 Ah	
Starting motor	24 V – 4.8 kW	
TRANSMISSION		
Torque Converter Type	Single-stage, single-phase	
* Fully automatic power shift, countershaft type with soft-shift in range and direction. Properly matched torque converter to engine and transmission for excellent working ability		
Travel Speed, mph (km/h)	4 speed T/M	
Forward	1st	6.6 (4.1)
	2nd	12.1 (7.5)
	3rd	23.6 (14.7)
	4th	39.5 (24.5)
Reverse	1st	7.0 (4.3)
	2nd	12.7 (7.9)
	3rd	24.8 (15.4)
AXLES		
Drive System	Four-wheel drive system	
Mount	Rigid front axle and oscillating rear axle	
Front Axle	Fixed	
Rear Axle Oscillation	Oscillating ±11° degrees	
Hub Reduction	Planetary reduction at wheel end	
Differential	Hyd Locking Front/ Conventional Rear	
Reduction Ratio	20.365	
HYDRAULIC SYSTEM		
Type	Load sensing hydraulic system	
Pump	Variable displacement piston pump, 34.9 gpm (132 lpm)	
Control valve	3 spool (Bucket, Boom, Aux)	
System pressure	3,626 psi (250 bar)	
3rd Function Auxiliary Flow	Rated output flow	34.8 gpm (132 ℓ /min)
	Maximum Pressure	3,626 psi (250 bar)
Lift Circuit	The valve has four functions: raise, hold, lower and float can adjust automatic kickout from horizontal to full lift.	
Tilt Circuit	The valve has three functions: tilt back, hold and dump. Can adjust automatic bucket positioner to desired load angle.	
Cylinder	Type : Double acting	
	No. of cylinders-bore x stroke:	
	Lift 2- 3.9" X 2'6" (100 X 750 mm)	
Cycle Time	Tilt 2- 3.5" X 2'6.5" (90 x 775 mm)	
	Raise: 5.8 sec, Dump: 2.2 sec	
	Lower: 3.6 sec, Total: 11.6 sec	
* Hyundai Bio Hydraulic Oil (HBHO) available		

OVERVIEW			
Description	Unit	HL930A TM	
Operating weight	kg	11,960	
	lb	26,370	
Bucket capacity	Heaped	m³	1.7
		yd³	2.2
	Struck	m³	1.4
		yd³	1.8
Breakout force-bucket	kg	9,950	
	lb	21,940	
Tipping load	Straight	kg	8,100
		lb	17,860
	Full	kg	7,050
		lb	15,545
BRAKES			
Service Brakes	Hydraulically actuated, wet disc brakes actuate all 4 wheels independent axle-by-axle system. Self adjusting & wheel speed brake.		
Travel Brake	Four-wheel, Outboard, wet-disc type, full hydraulic		
Parking Brake	Spring-applied, hydraulically released brake		
Emergency Brake	When brake oil pressure drops, indicator light alerts operator and parking brake automatically applies.		
STEERING SYSTEM			
Type	Load sensing hydrostatic articulated steering		
Pump	Variable displacement piston pump, 34.9 gpm (132 lpm)		
Relief Valve Setting	3,046 psi (210 bar)		
Cylinder	Double acting 2.4" X 1' 4"mm (2-60 X 412)		
Steering Angle	40° to both right and left angle, respectively		
Features	Center-point frame articulation. Tilt and telescopic steering column.		
SERVICE REFILL CAPACITIES			
Fuel tank	50 US gal (189.5 ℓ)		
DEF tank	5.0 US gal (19.0 ℓ)		
Cooling system	8.3 US gal (31.5 ℓ)		
Crankcase	2.9 US gal (11.0 ℓ)		
Transmission	9.1 US gal (34.5 ℓ)		
Front axle	6.1 US gal (23.0 ℓ)		
Rear axle	6.1 US gal (23.0 ℓ)		
Hydraulic tank	23.8 US gal (90.0 ℓ)		
Hydraulic system (including tank)	34.3 US gal (130.0 ℓ)		
CABIN			
ROPS / FOPS Cabin Meet ISO 3471 and ISO 3449			
CAB NOISE LEVEL			
Guaranteed noise level presented below can be differed depending on a range of factors such as operating condition, speed of a cooling fan, types of engine and so forth. Hearing protection shall be necessary if an operator is working in the improperly maintained cabin or exposed to a noisy environment by leaving doors and/or windows open.			
With cooling fan speed at maximum value:			
Operator sound pressure level (ISO 6396:2008)		70 dB(A)	
Exterior sound power level (ISO 6395:2008)		102 dB(A)	
* Distance of 15 m (49.2 ft), moving forward in second gear ratio.			
TIRES			
Type	Tubeless, loader design tires		
Standard	17.5 R25, ★★, L3		
Options include	17.5 R25, ★, XHA		

## HL930A TM DIMENSIONS

All dimensions are approximate.

Description	HL930A TM
A OVERALL LENGTH	7230 (23' 9")
B OVERALL WIDTH	2400 (7' 10")
C OVERALL HEIGHT	3170 (10' 5")
D GROUND CLEARANCE	370 (1' 3")
E WHEELBASE	2900 (9' 6")
F TREAD	1930 (6' 4")
G DUMP CLEARANCE AT 45 °	2785 (9' 2")
H DUMP REACH (FULL LIFT)	1160 (3' 10")
I WIDTH OVER TIRES	2375 (7' 10")
J DUMP ANGLE	50
K ROLL BACK ANGLE	AT CARRY 53 AT GROUND 49



## HL930A TM / DENSITY OF OPERATING MATERIALS

Loose material		Material Density
Earth/clay		1.5~1.7 tons / m <sup>3</sup> (2,528~2,865 lb / yd <sup>3</sup> )
Sand and gravel		1.5~1.7 tons / m <sup>3</sup> (2,528~2,865 lb / yd <sup>3</sup> )
Aggregate	25~76 mm (1" to 3")	1.6~1.7 tons / m <sup>3</sup> (2,697~2,865 lb / yd <sup>3</sup> )
	19 mm (3/4") and larger	1.8 tons / m <sup>3</sup> (3,034 lb / yd <sup>3</sup> )

## HL930A TM BUCKET SELECTION CHART

### Standard Lift Arm - General Purpose Bucket

Type	m <sup>3</sup> (yd <sup>3</sup> )	1.0	1.1	1.2	1.3	1.4	1.5	1.6	1.7	1.8	1.9	2.0	2.1	2.2	2.3	2.4	2.5
Tool Master HCE QC mounted Cutting edge Cutting edge Q/C	1.7 (2.20)									2.0 m <sup>3</sup> (2.61 yd <sup>3</sup> )							1.6 m <sup>3</sup> (2.09 yd <sup>3</sup> )
Tool Master ISO QC mounted Cutting edge	1.9 (2.50)			2.2 m <sup>3</sup> (2.87 yd <sup>3</sup> )								1.8 m <sup>3</sup> (2.35 yd <sup>3</sup> )					

115% 100% 95%





ENGINE	STD	OPT
<b>ENGINE, CUMMINS, B4.5</b>		
3 Stage air precleaner	•	
Alternator, 95A	•	
Fuel warmer	•	
Engine oil level dipstick gauge	•	
Fuel / water separator	•	
WGT (Waste Gate Turbo)	•	
<b>CLEAN EMISSION MODULE</b>		
DOC, DPF and SCR	•	
Active Emission Regeneration (No Manual Regeneration Required)		
Stage V Certified Emissions	•	
EGR Free	•	
Automatic Regeneration	•	
<b>COOLING SYSTEM</b>		
Antifreeze	•	
Auto Reversing Fan (adjustable Time/ Interval Frequencies) w/ Manual Override	•	
Coolant Level Sight Gauge	•	
Fan guard	•	
Wide Fin Radiator	•	
<b>POWER TRAIN</b>		
<b>TRANSMISSION</b>		
Transmission F4/R3, computer controlled, electronic soft shift, auto-shift and kick-down features included	•	
Transmission oil sight level	•	
Wide Fin Transmission Oil Cooler	•	
<b>AXLE</b>		
Conventional (Rear)	•	
Hydraulic lock differential (Front)	•	
Limited slip differential (Front / Rear)		•
<b>BRAKE</b>		
Parking brake	•	
Service brake (Enclosed wet-disc)	•	
<b>TIRES</b>		
17.5 R25, ★★, L3	•	
17.5 R25, ★, XHA		•
<b>HYDRAULIC SYSTEM</b>		
Diagnostic pressure taps	•	
Hyundai Bio Hydraulic Oil (VG46)		•
Hydraulic oil level sight gauge	•	
Hydraulic Oil VG32		•
Hydraulic Oil VG46	•	
Wide Fin Hydraulic Oil Cooler	•	
<b>HYDRAULIC CONTROL</b>		
Fingertip		•
Joystick	•	
<b>ELECTRO-HYDRAULIC CONTROL</b>		
Boom kickout, automatic	•	
Bucket positioner, automatic	•	
Extra piping for auxiliary function	•	
Fingertip		•
Joystick	•	
Quick coupler piping	•	
Ride control system	•	
<b>CAB &amp; INTERIOR</b>		
<b>ALARMS, AUDIBLE AND VISUAL</b>		
Air filter clogging	•	
Battery voltage	•	
Brake oil pressure	•	
DEF low level	•	
Engine coolant level	•	
Engine coolant temperature	•	
Engine oil pressure	•	
Fuel level	•	
Hydraulic oil temperature	•	
Parking brake	•	
Service brake oil pressure	•	
Seat belt ON/OFF	•	
Transmission error	•	
Transmission oil temperature	•	

CAB & INTERIOR	STD	OPT
<b>GAUGES</b>		
Diesel Exhaust Fluid (DEF) level	•	
Engine coolant temperature	•	
Fuel level	•	
Horn, electric	•	
Speedometer	•	
Transmission oil temperature	•	
<b>INDICATOR LIGHTS</b>		
Clutch Cut Off	•	
Differential Lock	•	
Engine auto stop	•	
FNR	•	
High beam	•	
Parking brake	•	
Pilot cut off	•	
Ride control	•	
Seat belt ON/OFF	•	
Turning light	•	
<b>LCD DISPLAY</b>		
Clock and fault code	•	
DEF level	•	
DEF low level	•	
Engine rpm	•	
Horn, electric	•	
Job time and distance	•	
Operating hour counter	•	
Transmission gear range	•	
<b>BATTERIES</b>		
850CCA, 12V, 2PCS	•	
<b>LIGHTING SYSTEM</b>		
Brake lights(Counterweight)	•	
LED dome light	•	
2 Head lights on front tower	•	
2 Head lights (LED) on front tower		•
2 Stop and tail lights	•	
4 Turn signals	•	
2 Working lights on front roof		•
4 Working lights on front roof		•
2 Working lights on rear roof		•
4 Working lights (LED) on front roof		•
2 Working lights (LED) on rear roof		•
2 Working lights on grill	•	
2 Working lights (LED) on grill		•
<b>SWITCHES</b>		
Battery master switch	•	
Differential Lock	•	
Emergency steering		•
FNR shifter	•	
Hazard	•	
Parking	•	
Pilot cut off	•	
<b>SYSTEM MEMORY SETTINGS</b>		
Autolube, integrated in secondary display		•
Auto position	•	
Beacon light		•
Fine modulation	•	
Main light	•	
Mirror heat	•	
Quick coupler	•	
Rear wiper	•	
Ride control	•	
Work light	•	
Work load	•	
<b>IGNITION</b>		
Key	•	
Push Start Button		•
<b>CAB (SOUND SUPPRESSED)</b>		
24V to 12V DC converter (20A)	•	
Coat hook	•	
Magazine pocket	•	
One door cab	•	
Radio / USB player	•	

CAB & INTERIOR	STD	OPT
<b>CAB(SOUND SUPPRESSED)</b>		
Rear view mirrors (1 Inside)	•	
Rear view mirrors (2 Outside, heated)	•	
Roller type sunshade (Front window)	•	
ROPS / FOPS CAB.	•	
Rubber floor mat	•	
Steering column, tilt and telescopic	•	
Steering wheel with knob	•	
Tinted safety glass	•	
Wrist rest	•	
<b>DOOR</b>		
Door and cab locks, one key	•	
Doors, service access (Locking)	•	
Doors, service access (Remote control)		•
<b>AUTOMATIC CLIMATE CONTROL</b>		
Air conditioner & heater	•	
Defroster	•	
Intermittent wiper and washer, front and rear	•	
<b>SEAT</b>		
3* Retractable seat belt & adjustable air suspension (Heated)	•	
<b>PERSONAL STORAGE SPACE</b>		
Console box	•	
Holder, can and cup	•	
<b>PEDALS</b>		
Accel pedal without ECO switch	•	
Dual-brake pedal		•
One accelerator pedal	•	
One brake pedal	•	
<b>SAFETY</b>		
Alarm, back-up	•	
Boom safety lock		•
Emergency steering		•
Emergency stop	•	
Fire extinguisher		•
<b>OBJECT DETECTION</b>		
AAVM - All Around View Monitoring		•
IMOD (Intelligent Moving Object Detection)		•
RADAR + Secondary Mornitor		•
<b>OTHERS</b>		
2nd Monitor		•
3 Spool MCV	•	
Air Compressor		•
Auto Engine Shut Down	•	
Auto Grease System		•
Articulation Locking Bar	•	
Heavy Counterweight	•	
Hi-Mate, Satellite		•
ISO Quick Coupler	•	
LED Beacon Lamp		•
License Plate & 10W LED Lamp		•
Lift and tie-down hooks	•	
Loader linkage, sealed	•	
Sun Shade on Rear Window of Cabin		•
Vandalism protection caplocks	•	
Wheel Chocks		•
<b>SAFETY</b>		
Handrails	•	
Ladders	•	
Platforms	•	
Steps	•	
<b>TELEMATICS</b>		
ECD (Engine Connected Diagnostics)	•	
Hi MATE	•	
<b>GUARDS</b>		
Belly-Pan Guard		•
Crankcase	•	
Fenders (Front)	•	
Fenders (Rear)		•
Transmission	•	

\* Standard and optional equipment may vary. Contact your Hyundai dealer for more information. The machine may vary according to International standards.  
 \* The photos may include attachments and optional equipment that are not available in your area.  
 \* Materials and specifications are subject to change without advance notice.  
 \* All imperial measurements rounded off to the nearest pound or inch.

#### PLEASE CONTACT