

# SPECIFICATIONS HW250A MH

Powered By Cummins Performance Series Engine

**Net Power**  
SAE J1349 170 HP  
(127 kW) at 2,200 rpm

**Straight Boom**  
6.5 m (21' 4")  
**Arm**  
4.5 m (14' 9")

**Operating Weight**  
26,500 kg (58,422 lb)



ENGINE			
Maker / Model			Cummins B6.7
Type			4-cycle turbocharged, charged air, cooled diesel engine
Rated flywheel horse power	SAE	J1995 (gross)	173 HP (129 kW) at 2,200 rpm
		J1349 (net)	170 HP (127 kW) at 2,200 rpm
Max. torque			881 N·m (650 lb-ft) at 1,300 rpm
Piston displacement			6700 cc (409 in³)
Batteries			2 × 12 V × 100 Ah
Starting motor			24 V - 4.8 kW
Alternator			24 V - 95 Amp

## HYDRAULIC SYSTEM

### MAIN PUMP

Type	Variable displacement tandem axis piston pumps
Max. flow	2 x 208 lpm (2 x 55 gpm)

## CROSS-SENSING AND FUEL-SAVING PUMP SYSTEM

### HYDRAULIC MOTORS

Travel	Two speed axial pistons motor with brake valve and parking brake
Swing	Axial piston motor with automatic brake

### RELIEF VALVE SETTING

Implement circuits	350 kgf/cm <sup>2</sup> (4,980 psi)
Travel	380 kgf/cm <sup>2</sup> (5,400 psi)
Power boost (boom, arm, bucket)	380 kgf/cm <sup>2</sup> (5,400 psi)
Swing circuit	265 kgf/cm <sup>2</sup> (3,770 psi)
Pilot circuit	40 kgf/cm <sup>2</sup> (570 psi)
Service valve	Installed

### HYDRAULIC CYLINDERS

No. of cylinder bore X stroke	Boom: 2-120 x 1,275 mm (4.72 x 50.2 in)
	Arm: 2-115 x 1,138 mm (4.53 x 44.8 in)
	Outrigger: 4-130 x 436 mm (5.12 x 17.17 in)

### DRIVES & BRAKES

Drive method	Fully hydrostatic type
Drive motor	Axial piston motor, in-shoe design
Reduction system	Planetary reduction gear
Max. drawbar pull	11,600 kgf (25,570 lbf)
Max. travel speed (high / low)	35 km/h (21.7 mph) / 9.1 km/h (5.65 mph)
Gradeability	33° (65%)

#### Service Brake :

- Independent dual brake, front and rear axle full hydraulic power brake.
- Spring released and hydraulic applied wet type multiple disc brake.

#### Parking Brake :

- Spring applied and hydraulic released wet disc brake type in transmission.



## CONTROL

Pilot pressure operated joysticks and pedals with detachable lever provide almost effortless and fatigueless operation.

Pilot control	Two joysticks with one safety lever (LH): Swing and arm (RH): Boom *ISO pattern setting
Traveling and steering	Two levers with pedals
Engine throttle	Electric, Dial type

## OPERATING WEIGHT (APPROXIMATE)

Operating weight including 6.5 m (21' 4") Straight boom, 4.5 m (14' 9") Gooseneck arm, Front & rear outrigger, Lubricant, Coolant, Full Fuel Tank and Hydraulic Tank and etc.

### OPERATING WEIGHT

Front and rear outrigger Without grapple	26,500 kg (58,420 lb)
Front and rear outrigger With factory installed grapple	27,900 kg (61,510 lb)

## SWING SYSTEM

Swing motor	Fixed displacement axial piston motor
Swing reduction	Planetary gear reduction
Swing bearing lubrication	Grease-bathed
Swing brake	Multi wet disc
Swing speed	10.7 rpm

## SERVICE REFILL CAPACITIES

	liter	US gal
Re-filling		
Fuel tank	310.0	81.9
Engine coolant	40	10.6
Engine oil	24.4	6.4
Swing device	6.2	1.6
Axle	Front	14.6
	Rear	18.5
Hydraulic system (including tank)	340.0	89.8
Hydraulic tank	165.0	43.6
DEF/AdBlue®	48	12.6

## UNDERCARRIAGE

Reinforced box-section frame is all-welded, low-stress.

Front and Rear Outriggers	Provide max. operation stability when lifting.
---------------------------	--

# SPECIFICATIONS

## HW250A MH

Powered By Cummins Performance Series Engine

### HW250A MH DIMENSIONS

Unit: mm (ft-in)

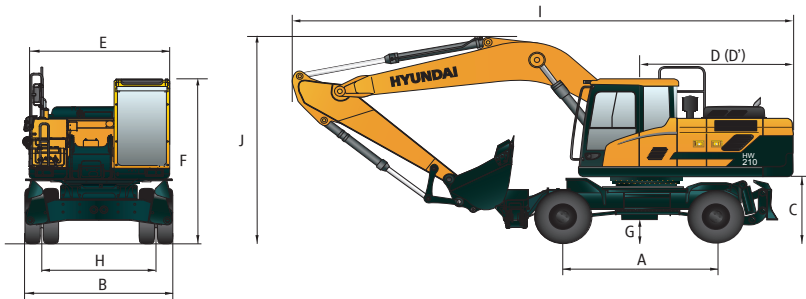
6.5 m (21' 4") Straight boom, 4.5 m (14' 9") Gooseneck Arm

A	Wheel base	2,800	(9' 2")
B	Short Axle	2,530	(8' 4")
	Wide Axle (Standard)	2,750	(8' 12")
C	Ground clearance of counterweight	1,295	(4' 3")
D	Rear-end distance	2,733	(8' 12")
D'	Rear-end swing radius	2,733	(8' 12")
E	Upperstructure width	2,530	(8' 4")
F	Overall height of cab	3,260	(10' 8")
G	Min. ground clearance	353	(1' 2")
H	Tread	1,914	(6' 3")

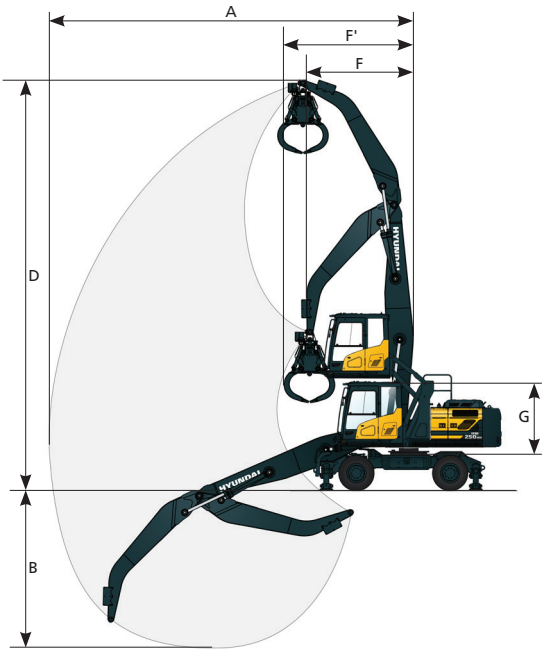
### HW250A MH WORKING RANGE

Unit : mm (ft-in)

Boom length	6,500 (21' 4")	
Arm length	Gooseneck Arm	Straight Arm (Optional)
	4,500 (14' 9")	4,000 (13' 1")
A	Max. reach	10,700 (35' 1")
B	Max. depth	4,700 (15' 5")
D	Max. height	12,100 (39' 8")
F	Min. swing radius (without grapple)	2,700 (8' 10")
F'	Min. swing radius (with HCE grapple)	3,000 (9' 10")
G	Cab Riser Height	2,500 (8' 2")



Boom length	6,500 (21' 4")
Arm length	4,500 (14' 9")
I	Overall length (Shipping position)
J	Overall height of boom (Traveling position)
K	Overall height of guardrail



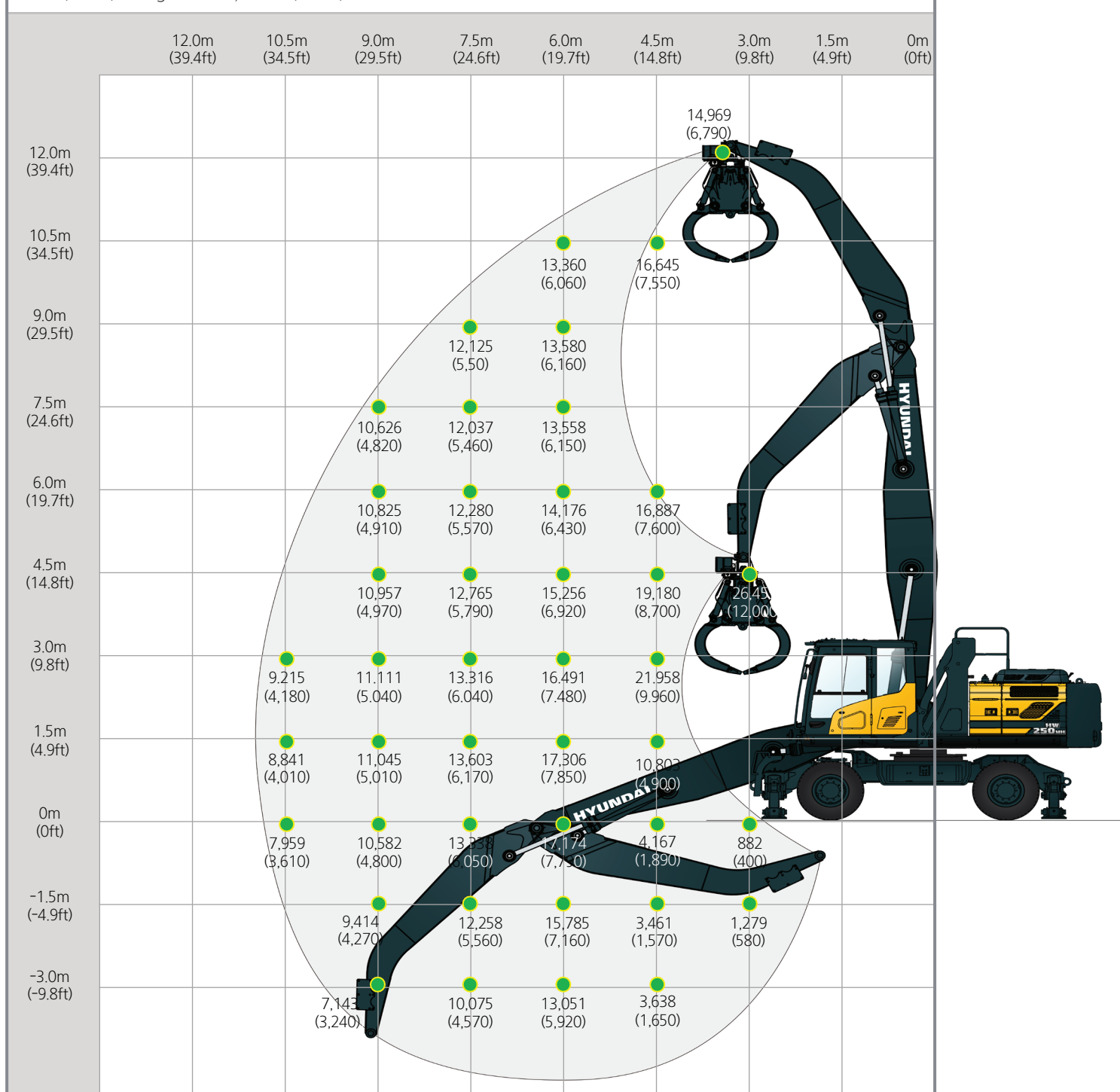
# SPECIFICATIONS HW250A MH

Powered By Cummins Performance Series Engine

## HW250A MH LIFTING CHART

Unit : lb (kg)

6.5 m (21' 4") Straight boom, 4.5 m (14' 9") Gooseneck Arm



### NOTES:

1. Lifting capacity is based on SAE J1097, ISO 10567. Without Grapple.
2. Load point is the end pin point of front attachment.
3. Lifting capacity does not exceed 75% of tipping load or 87% of hydraulic capacity.
4. Lifting capacity is based on 350 bar system pressure therefore power boost mode may provide more lifting capacity.
5. All lifting capacity is based on over front side.



# SPECIFICATIONS HW250A MH

Powered By Cummins Performance Series Engine

ENGINE	STD	OPT
Cummins B6.7 engine	•	
HYDRAULIC SYSTEM	STD	OPT
<b>Intelligent Power Control (IPC)</b>		
3-power mode, 2-work mode, user mode	•	
Variable Power Control	•	
Pump Flow Control	•	
Attachment Mode Flow Control	•	
Engine Auto Idle	•	
Engine Auto Shutdown Control	•	
Electronic Fan Control	•	
CAB & INTERIOR	STD	OPT
<b>ISO Standard cabin</b>		
Rise-up type windshield wiper	•	
Radio / USB player	•	
Handsfree mobile phone system with USB	•	
12 volt power outlet (24V DC to 12V DC converter)	•	
Electric horn	•	
All-weather steel cab with 360° visibility	•	
Safety glass windows	•	
Sliding fold-in front window	•	
Sliding side window (LH)	•	
Lockable door	•	
Hot & cool box	•	
Storage compartment	•	
Transparent cabin roof-cover	•	
Sun visor	•	
Door and cab locks, one key	•	
Pilot-operated slidable joystick	•	
Console box height adjust system	•	
<b>Automatic climate control</b>		
Air conditioner & heater	•	
Defroster	•	
Starting Aid (air grid heater) for cold weather	•	
<b>Centralized monitoring</b>		
8" LCD display	•	
Engine speed or trip meter/accel.	•	
Engine coolant temperature gauge	•	
Max power	•	
Low speed/high speed	•	
Auto idle	•	
Overload	•	
Check engine	•	
Air cleaner clogging	•	
Indicators	•	
ECO gauges	•	
Fuel level gauge	•	
Hyd. oil temperature gauge	•	
Fuel warmer	•	
Warnings	•	
Communication error	•	
Low battery	•	
Clock	•	
Cabin front window rain guard		•
Cabin roof-steel cover		•

CAB & INTERIOR	STD	OPT
<b>Seat</b>		
Adjustable air suspension seat with heater	•	
<b>Cabin FOPS/FOG</b>		
FOPS (Falling Object Protective Structures)ISO 3449 Level 2		•
FOG (Falling Object Guard)		•
<b>Cabin ROPS</b>		
ROPS (Roll Over Protective Structures)	•	
SAFETY	STD	OPT
Battery master switch	•	
Rearview camera	•	
AAVM (Advanced Around View Monitoring)		•
Four front working lights (2 boom mounted, 2 front frame mounted)	•	
Travel alarm	•	
Rear work lamp on counterweight		•
Beacon lamp		•
Automatic swing brake	•	
Boom holding system		•
Arm holding system		•
Safety lock valve for boom cylinder with overload warning device		•
Safety lock valve for arm cylinder		•
Swing lock system		•
Four outside rearview mirror	•	
OTHER	STD	OPT
<b>Booms</b>		
6.5 m (21' 4") Straight boom	•	
<b>Arms</b>		
4.0 m (13' 1") Straight		•
4.5 m (14' 9") Gooseneck	•	
Removable clean-out dust net for cooler	•	
Fuel pre-filter	•	
Fuel warmer	single	•
Self-diagnostics system		•
Hi-mate (Remote Management System)	Mobile	•
	Satellite	•
Batteries (2 x 12V x 100 AH)		•
Piping circuit for grapple to open/close & rotate		•
Accumulator for lowering work equipment		•
Pattern change valve (2 patterns)		•
Fine Swing Control System		•
Travel pedal (2way)		•
UNDERCARRIAGE	STD	OPT
Front and rear outrigger	•	
Tires-dual (10.00-20-16PR tube)	•	
Tires-dual (10.00-20 solid)		•

\* Standard and optional equipment may vary. Contact your Hyundai dealer for more information.  
 The machine may vary according to International standards.  
 \* The photos may include attachments and optional equipment that are not available in your area.  
 \* Materials and specifications are subject to change without advance notice.  
 \* All imperial measurements rounded off to the nearest pound or inch.



www.hceamericas.com  
 6100 Atlantic Blvd., Norcross, GA 30071  
 TEL (678) 823 7777 FAX (678) 823 7778

## PLEASE CONTACT